

Sample Report

Custom Reports

AHP Report on Giving

Access to an online database to **create comparison groups** of your own choosing and to delve deeper into the Report on Giving data by running **numerous custom reports** as presented here.

Custom reports.
Overall performance metrics.

Learn more at:
www.ahp.org/reportongiving

FY 2012	Total Cash	Total Production	Total FR Expenses	Net FR Revenue (Prod)
My Foundation	\$ 2,940,226	\$ 3,223,656	\$ 856,097	\$ 2,367,559
Comparison Group*	\$ 2,854,405	\$ 3,911,092	\$ 923,959	\$ 2,987,133

FY 2012	CTRD Cash	ROI Cash	CTRD Production	ROI Production
My Foundation	\$ 0.29	\$ 3.43	\$ 0.26	\$ 3.76
Comparison Group*	\$ 0.32	\$ 3.08	\$ 0.24	\$ 4.23

FY 2012	FTEs (Direct)	FR REV/FTE	Number of Donors
My Foundation	7	\$ 338,222.71	3,000
Comparison Group*	5	\$ 397,426.60	2,500

*refers to the group of cohorts you choose to compare yourself with, ie. community hospitals, number of FTEs, location.

Example: Executive Dashboard displaying your data compared to a group of peers. Numbers are for display purposes.

Sample Report

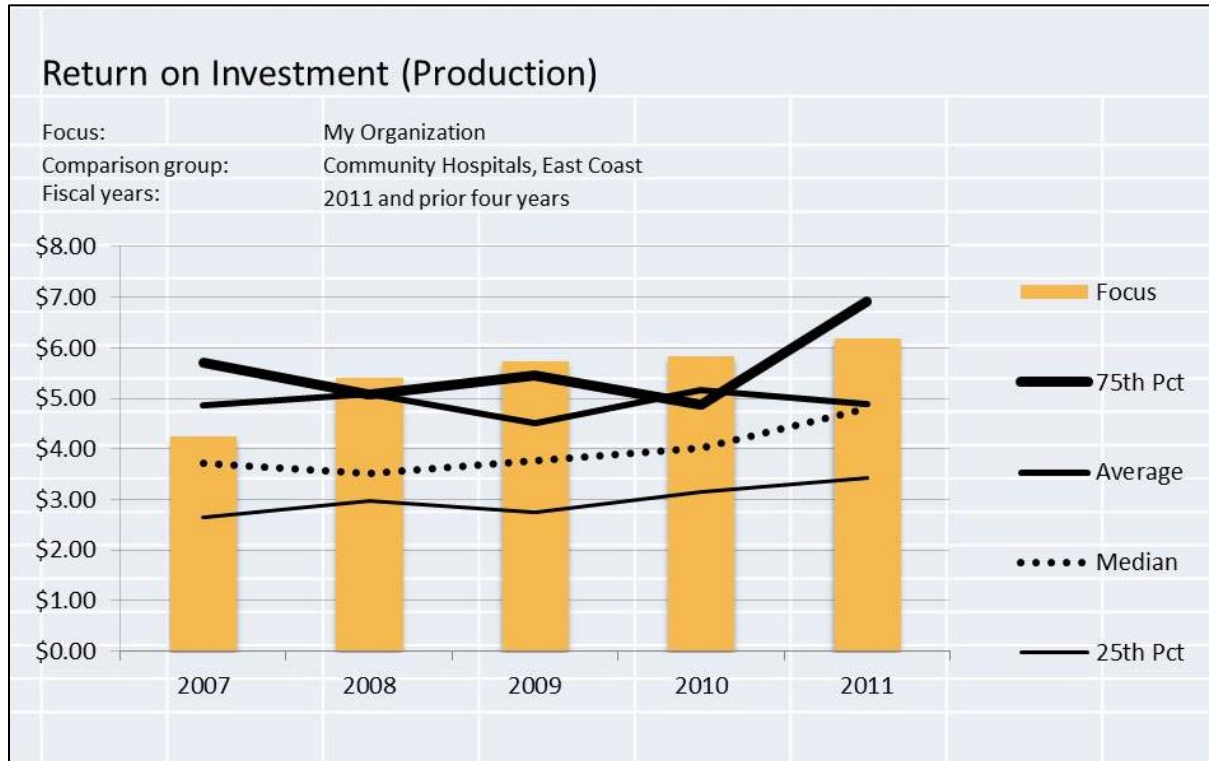
Custom Reports

AHP Report on Giving

Access to an online database to **create comparison groups** of your own choosing and to delve deeper into the Report on Giving data by running **numerous custom reports** as presented here.

Custom reports.
Overall performance metrics.

Learn more at:
www.ahp.org/reportongiving



Example: 5 Year Trend Report displaying your data (Focus, orange bars) compared to a group of peers (Black lines by percentile) .
Numbers are for display purposes.

Sample Report

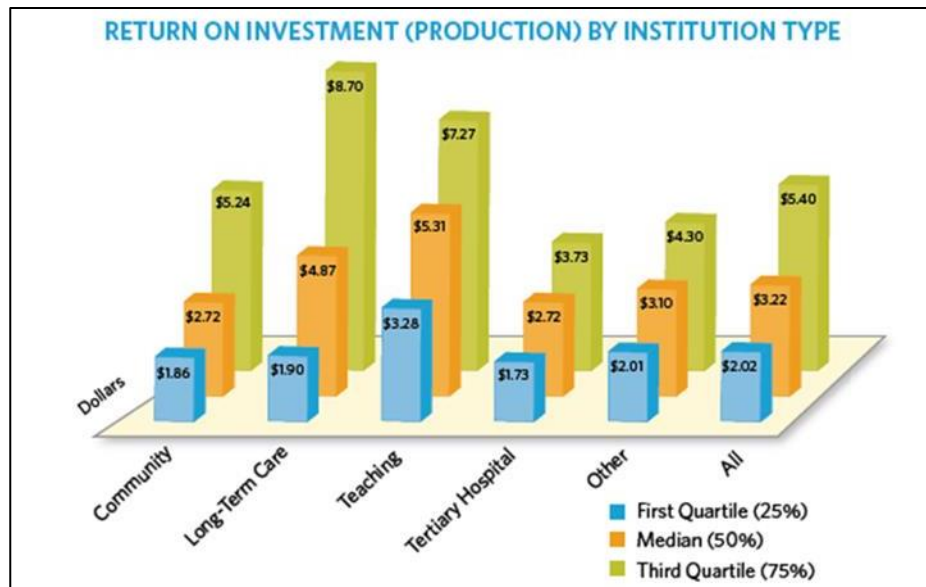
Custom Reports

AHP Report on Giving

Access to an online database to **create comparison groups** of your own choosing and to delve deeper into the Report on Giving data by running **numerous custom reports** as presented here.

Custom reports.
Overall performance metrics.

Learn more at:
www.ahp.org/reportongiving



Numbers are for display purposes.